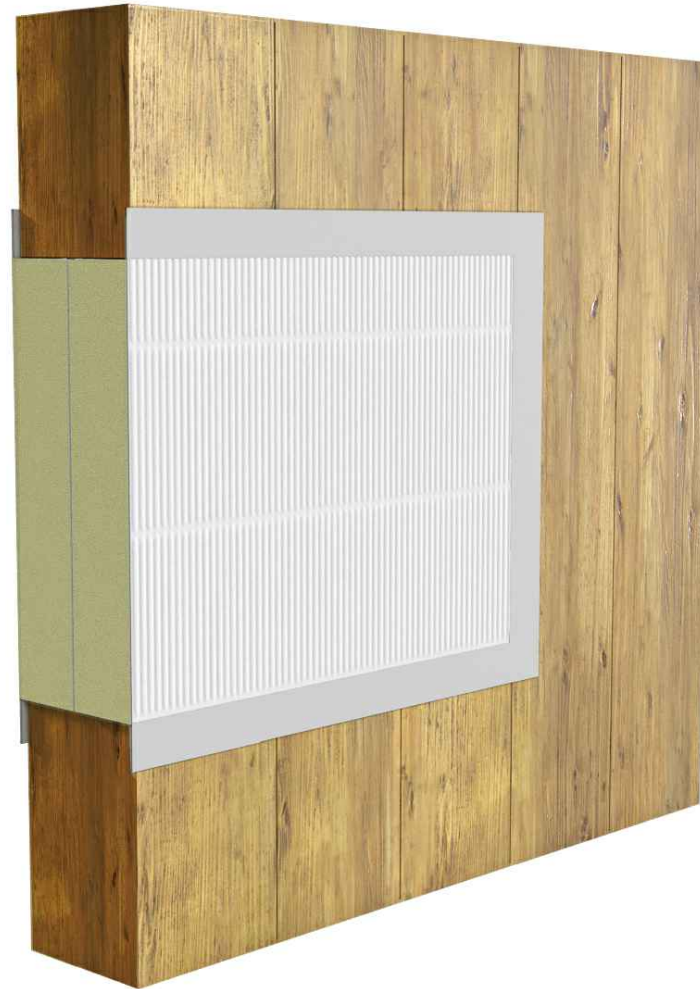


AGNI-System №AB-091

Step-by-step installation instructions:

1. Ensure the aperture is free from dust and debris.
2. Friction fit two layers of AGNI-Board in the aperture.
3. Coat all damages of AGNI-Board with AGNI-Coat.
4. Seal the joints between CLT and the board with AGNI-Seal, ensuring a smooth, flush finish.



Technical Information

System ID	AB-091
Substrate	Min. 100mm CLT wall
Aperture dimensions	350mm x 350mm
AGNI-Products	AGNI-Seal, AGNI-Board, AGNI-Coat
Protection installation	Both sides of the wall

Compliance Information

Standards	AS1530.4-2014, AS4072.1-2005
FRR/FRL	-/60/60
Reference	PF24086



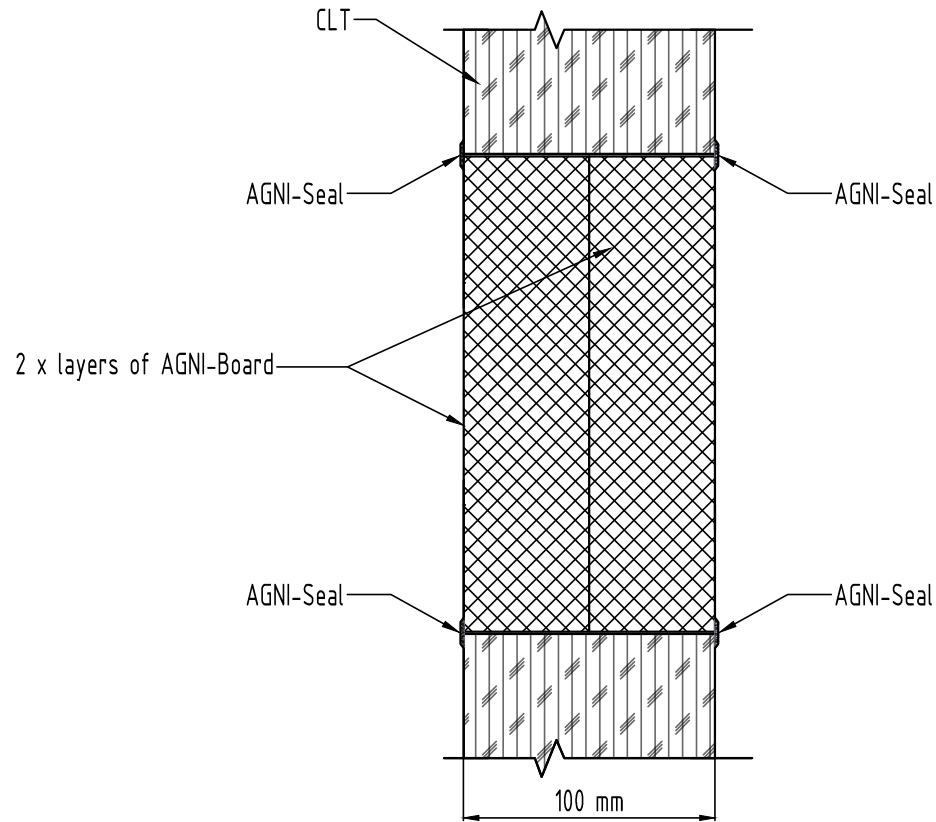
Agnitek
FIRE RATED TECHNOLOGY

8 Clare St Bayswater
VIC 3153, AUSTRALIA
+61 (03) 7045 4242
info@agnitek.com.au
www.agnitek.com.au

Date 30.08.2024

Disclaimer

Agnitek reserves the right to modify product specifications without prior notice due to its ongoing research, development & certification programme. The information in this document is provided in good faith and is intended for guidance purposes only. Any accompanying drawings are solely for illustrative purposes. Since Agnitek cannot oversee installation methods or ensure site conditions, no warranties, expressed or implied, are intended regarding the products' actual performance. We do not accept liability for



Technical Information

System ID	AB-091
Substrate	Min. 100mm CLT wall
Aperture dimensions	350mm x 350mm
AGNI-Products	AGNI-Seal, AGNI-Board, AGNI-Coat
Protection installation	Both sides of the wall

Compliance Information

Standards	AS1530.4-2014, AS4072.1-2005
FRR/FRL	-/60/60
Reference	PF24080



Agnitek
FIRE RATED TECHNOLOGY

8 Clare St Bayswater
VIC 3153, AUSTRALIA
+61 (03) 7045 4242
info@agnitek.com.au
www.agnitek.com.au

Date	30.08.2024
------	------------

Disclaimer
Agnitek reserves the right to modify product specifications without prior notice due to its ongoing research, development & certification programme. The information in this document is provided in good faith and is intended for guidance purposes only. Any accompanying drawings are solely for illustrative purposes. Since Agnitek cannot oversee installation methods or ensure site conditions, no warranties, expressed or implied, are intended regarding the products' actual performance. We do not accept liability for